

E - MAIL



By

Dr M. Senthilkumar

Assistant Professor

Department of Computer Science

Government Arts and Science College, Avinashi - 641654

EMAIL – UA

User uses User Agent

UA to send and receive a message easier

Command-driven user agents: mail, pine, and elm

GUI-based user agents: Eudora, Outlook, and Netscape

EMAIL – MTA

Message Transfer Agents: Actual mail transfer

Client MTA: To Send a mail

Server MTA: To Receive a mail

SMTP: Defines MTA Client and Server in the Internet

Mostly, two pairs of MTA Client – Server are used

EMAIL – SMTP

First and Second stages of mail delivery use SMTP

SMTP is not involved in third stage SMTP

SMTP is a push protocol

SMTP pushes the message from the Client to the Server
In other words, the direction of the bulk data (messages) is from the client to the server

EMAIL – MAA

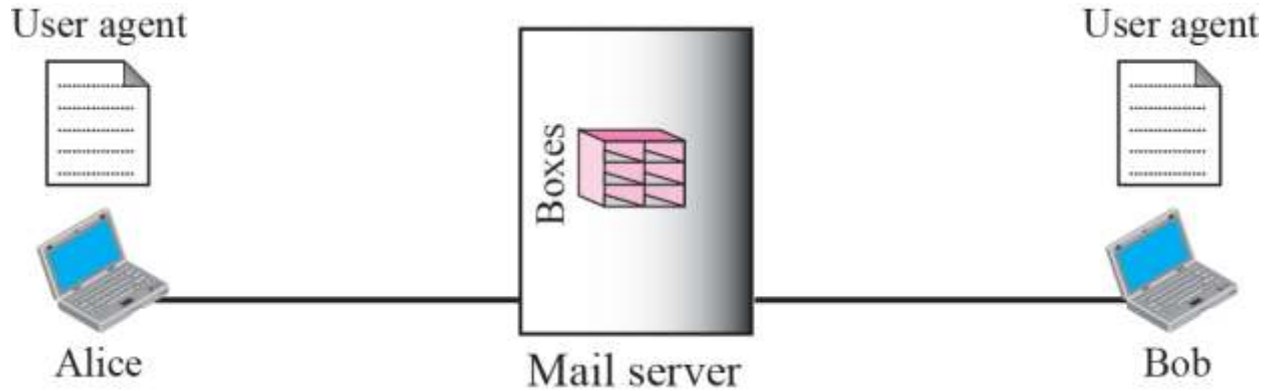
On the other hand, the third stage needs a pull protocol

The Client must Pull messages from the Server

The direction of the bulk data are from the server to the client

The third stage uses a Message Access Agent

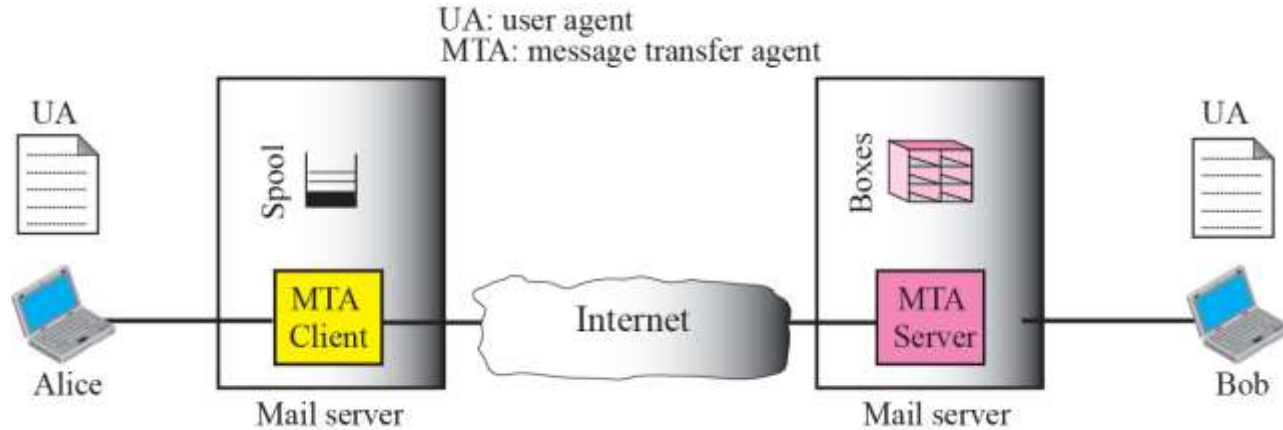
EMAIL – Scenario 1



Sender and Receiver are on the Same mail server

We need only two UAs

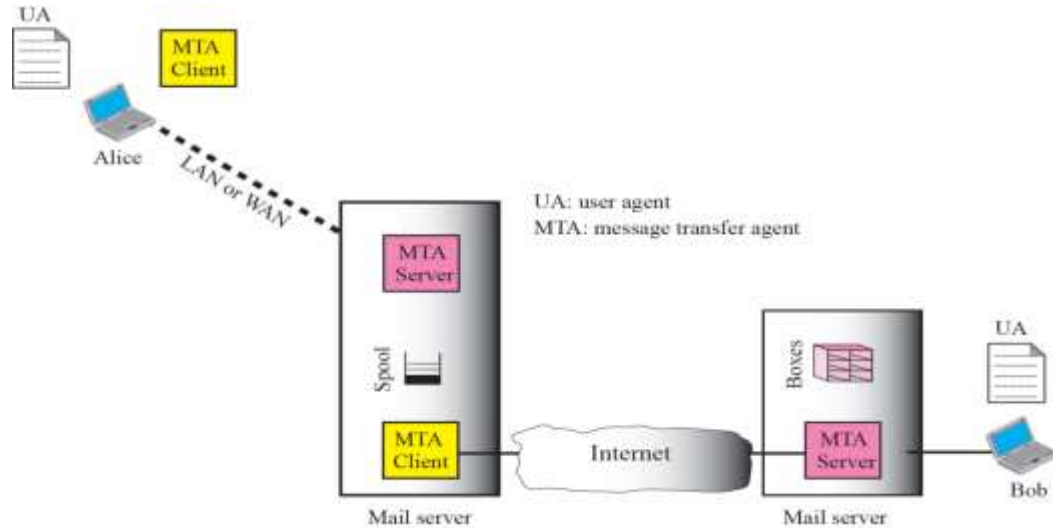
EMAIL – Scenario 2



Sender and Receiver of are on Different mail servers

We need two UAs and a pair of MTAs (C/S)

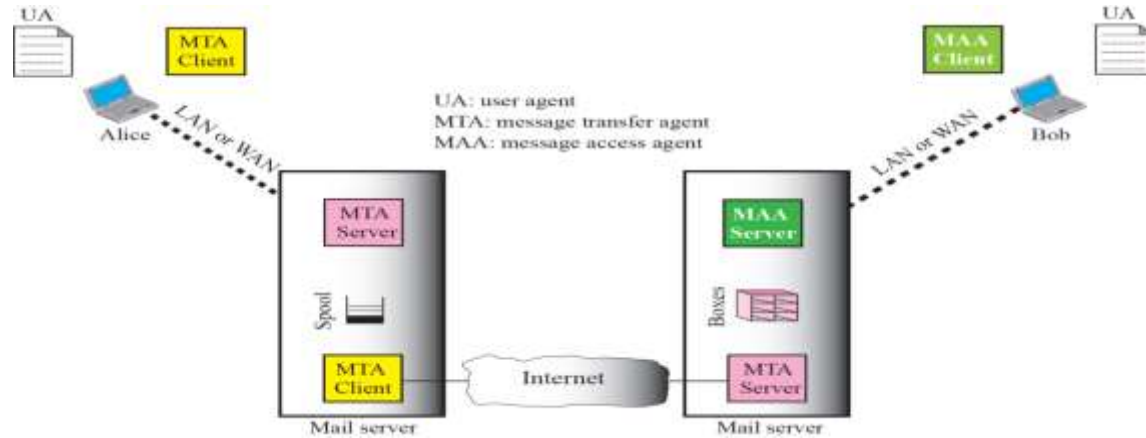
EMAIL – Scenario 3



Sender is connected to the mail server via a LAN/ WAN

We need two UAs and two pairs of MTAs (C/S)

EMAIL – Scenario 4



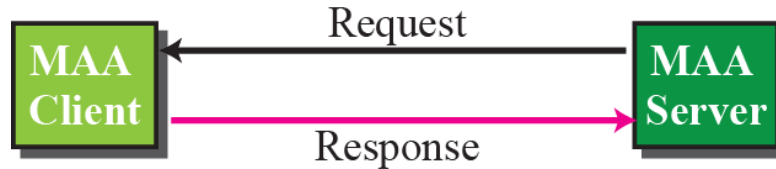
Sender and Receiver are connected to the mail server via a LAN/WAN

We need two UAs, two pairs of MTAs (C/S), and a pair of MAAs (C/S)

EMAIL – MTA C / S and MAA C/S



a. Client pushes messages



b. Client pulls messages

References

- ✓ Books: Data communication and Networking, Behrouz A Forouzan, Fourth edition
- ✓ Computer Networks, Andrew S. Tanenbaum, 4th edition, PHI
- ✓ Data Communication and Networks, Achyut Godbole, 2007, TMH.
- ✓ Computer Networks: Protocols, Standards, and Interfaces, Uyles Black, 2nd ed, PHI
- ✓ Various relevant websites

Thank You